



# CANrunner CAN Diagnostic Tool

**CANrunner** is a CAN analyzer and diagnostic software tool built with the cross-platform Qt toolkit. It is a powerful tool for software developers and service engineers, providing advanced data monitoring and analysis capabilities.

**CANrunner** allows users to

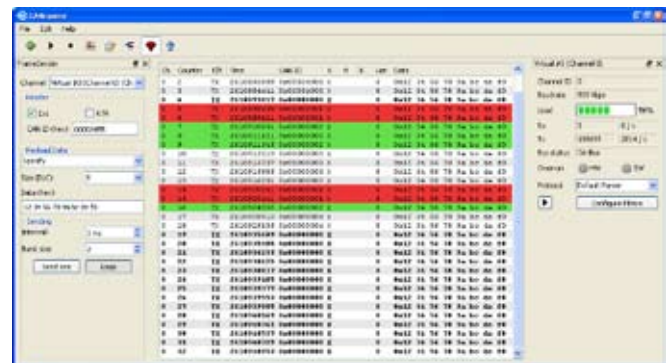


- Monitor real time data on CAN bus
- Analyze and catch problems on CAN bus
- View CAN bus statistics
- Parse CAN protocol specific data (such as CANopen, J1939, ISOBUS)
- Remotely diagnose CAN bus over Ethernet by connecting to WRM remote device. CANrunner can be used also as a part of Wapice's WRM remote management system.

You can download the **CANrunner** software for free at [www.wapice.com](http://www.wapice.com).

## Features:

- Operating systems: Windows, Linux
- Multiple hardware support (Kvaser, IXXAT, SocketCAN)
- Simultaneous diagnostics of multiple channels
- Channel status information
- Protocol parser plugin architecture that enables easy implementations of custom protocol parsers
- Advanced general filtering
- Protocol specific filtering through parser plugin architecture
- Fixed and running modes
- Configurable load generation
- Logging of CAN frames
- Flexible user interface



**CANrunner** - CAN diagnostic tool for advanced data monitoring and analysis

*Wapice Ltd is a Finnish software provider specialized in industrial solutions, systems and product development for Finland's leading industrial companies. Our software production is based on a certified ISO 9001:2008 quality management system. In Finland we have 200 experts in software development, electronic design and industrial process development at your service. For our globally functioning customers we make either parts of projects or overall solutions according to agreement. Our services are divided into three areas:  
Embedded Systems, Industrial Systems and Business Solutions.*



**For questions and needs, please contact:**

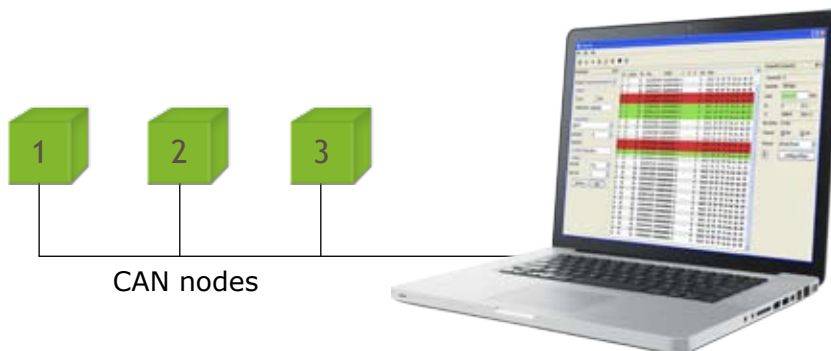
CANrunner product manager  
 Kåre Sars  
 +358 50 3229623  
 kare.sars@wapice.com



### Wapice CAN - robust communication expertise

Wapice's personnel have been actively using CAN technology for nearly two decades. We engage in the development of both electronics and software. Wapice currently provides CAN system implementations to a number of large industrial companies.

Wapice is a member of the CAN in Automation (CiA) development group.



### CANrunner technologies

CAN (Controller Area Network) is a communication protocol that is used in vehicles, machines and industrial devices. CAN is widely used because of its benefits: CAN is a robust communication protocol that has comprehensive error-checking and non-destructive bus arbitration features.

For more information, please visit <http://www.can-cia.org/>

Qt is a cross-platform application framework with an integrated development environment. Qt is typically used for developing applications with a graphical user interface in different environments ranging from embedded systems to PC tools. Being now a free Open Source software the use of Qt increases all the time.

For more information, please visit <http://qt.nokia.com/>

### Software solutions and R&D services

Wapice develops tailored customer driven software solutions empowering product development organizations and improving operations processes of customers. If you need new features to **CANrunner**, please contact **CANrunner** product manager (contact information on the other side).

#### VAASA HQ

Yliopistonranta 5  
FI-65200 Vaasa

Switchboard  
+358 6 319 4000

#### VAASA

Airport Park  
Yrittäjänkatu 17  
FI-65380 Vaasa

#### TAMPERE

Hermiankatu 3 A  
FI-33720 Tampere

#### HYVINKÄÄ

Kankurinkatu 4-6  
FI-05800 Hyvinkää

#### OULU

Laakeritie 22  
FI-90620 Oulu

#### SEINÄJOKI

Tiedekatu 2  
FI-60320 Seinäjoki