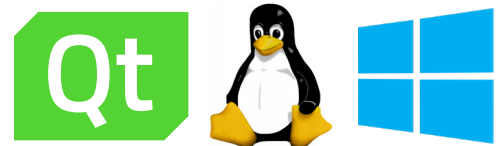


CANrunner

CANrunner is a CAN analyzer and diagnostic software tool built with the cross-platform Qt toolkit. It is a powerful tool for software developers and service engineers, providing advanced data monitoring and analysis capabilities.

CANrunner allows users to

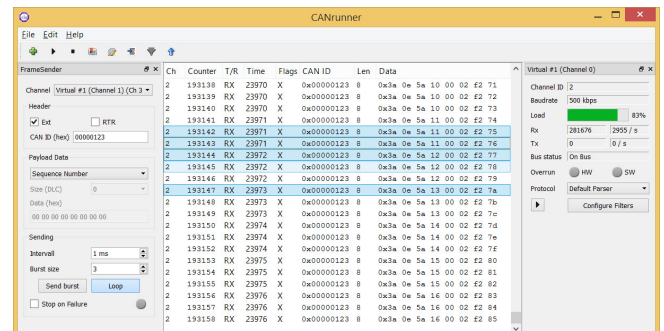
- Monitor real time data on CAN bus
- Analyze and catch problems on a CAN bus
- View CAN bus statistics
- Parse CAN protocol specific data (such as CANopen and J1939)
- Future: Remotely diagnose CAN bus over Ethernet by connecting to WRM247+ remote device



You can download the **CANrunner application** for free at www.wapice.com.

Features:

- Operating systems: Windows, Linux
- Multiple hardware support (Kvaser, IXAT, SocketCAN)
- Simultaneous diagnostics of multiple channels
- Channel status information
- Protocol parser plugin architecture that enables easy implementations of custom protocol parsers
- Advanced general filtering
- Protocol specific filtering through parser plugin architecture
- Fixed and running modes
- Configurable load generation
- Logging of CAN frames
- Flexible user interface
- Playback of log-file
- Frame sending



CANrunner - CAN diagnostic tool for advanced data monitoring and analysis

Wapice Ltd is a Finnish software provider specialized in industrial solutions, systems and product development for Finland's leading industrial companies. Our software production is based on a certified ISO 9001:2008 and ISO 14001:2004 quality management system. We have over 340 experts in software development, electronics design and industrial process development at your service. For our globally functioning customers we make either parts of projects or overall solutions according to agreement. Our services are divided into three areas: Embedded Systems, Industrial Systems and Business Solutions.



In any questions and needs, please contact:

CANrunner product manager
Kåre Särs
+358 50 322 9623
kare.sars@wapice.com

Wapice CAN - robust communication expertise

Wapice's personnel have been actively using CAN technology for nearly two decades. We engage in the development of both electronics and software. Wapice currently provides CAN system implementations to a number of large industrial companies.

Wapice is a member of the CAN in Automation (CiA) development group.



CANrunner technologies

CAN (Controller Area Network) is a communication protocol that is used in vehicles, machines and industrial devices. CAN is widely used because of its benefits: CAN is a robust communication protocol that has comprehensive error-checking and non-destructive bus arbitration features.

For more information, please visit <http://www.can-cia.org/>

Qt is a cross-platform application framework with an integrated development environment. Qt is typically used for developing applications with a graphical user interface in different environments ranging from embedded systems to PC tools. Being now a free Open Source software the use of Qt increases all the time.

For more information, please visit <http://qt.digia.com/>

Software solutions and R&D services

Wapice develops tailored customer driven software solutions empowering product development organizations and improving operations processes of customers. If you need new features to CANrunner, please contact CANrunner product manager (contact information on the other side).